

# BLUSA SATÉN MUJER

Ref. 747

## DESCRIPCIÓN

- Blusa regular fit, corte femenino ligeramente entallado y adaptado a todas las anatomías
- Cuello redondo con pliegues que adornan el escote
- Cierra con botón y lágrima en la espalda
- Mangas largas cerradas fruncidas al puño
- Tejido satinado sin necesidad de plancha

## TEJIDO PRINCIPAL

Composición:

100% Poliéster

Gramaje: 130 g/m<sup>2</sup>

Ligamento: Satén

Encogimiento: 3%

Resist. Pilling: 3-4

Solidez a tinturas:

Luz: 3-4

Lavado: 3-4

Sudor: 3-4

Cloro: 1-2

## CERTIFICADOS



## CONSERVACIÓN



200

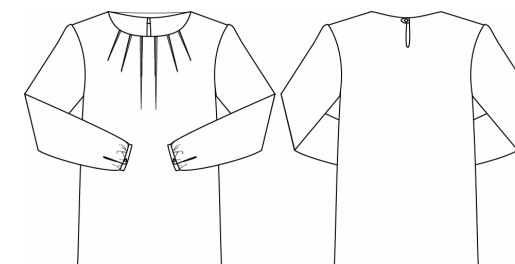
Blanco Roto

## PROPIEDADES FUNCIONALES



**Secado rápido:**

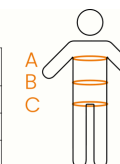
Tejido técnico con secado 50% más rápido que algodón



## TALLAS Y MEDIDAS

|           | 36 | 38 | 40 | 42  | 44  | 46  | 48  | 50  | 52  | 54  |
|-----------|----|----|----|-----|-----|-----|-----|-----|-----|-----|
| A PECHO   | 82 | 86 | 90 | 94  | 98  | 102 | 106 | 110 | 114 | 118 |
| B CINTURA | 64 | 68 | 72 | 76  | 80  | 85  | 90  | 95  | 100 | 105 |
| C CADERA  | 88 | 92 | 96 | 100 | 104 | 109 | 114 | 119 | 124 | 129 |

Medidas anatómicas en cm



# SATIN WOMEN'S BLOUSE

Ref. 747

**DESCRIPTION**

- Regular fit blouse, with a slightly tapered feminine cut adapted to all body shapes.
- Round neckline with pleats that embellish the neckline
- Closes with a button and teardrop at the back .
- Long sleeves with gathered cuffs .
- Satin fabric that doesn't require ironing.

**MAIN FABRIC**

**Composition:**  
100%Polyester

**Grammage:** 130 g/m<sup>2</sup>

**Ligament:** Satén

**Shrinkage:** 3%

**Pilling Fastness:** 3-4

**Coulour Fastness:**


**Light:** 3-4      **Perspiration:** 3-4

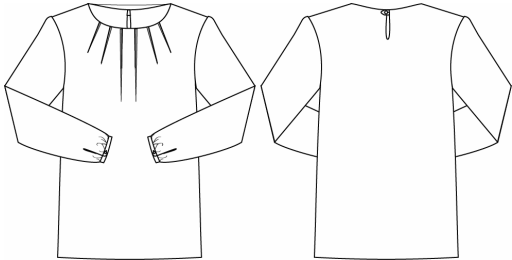
**Washing:** 3-4      **Chlorine:** 1-2



200  
Off White

**FUNCTIONAL PROPERTIES**

 **Quick-drying:**  
Technical fabric with 50% faster drying than cotton



**CERTIFICATES**

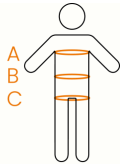


**CARE**



**SIZES AND MEASUREMENTS**

|         | 36 | 38 | 40 | 42  | 44  | 46  | 48  | 50  | 52  | 54  |
|---------|----|----|----|-----|-----|-----|-----|-----|-----|-----|
| A CHEST | 82 | 86 | 90 | 94  | 98  | 102 | 106 | 110 | 114 | 118 |
| B WAIST | 64 | 68 | 72 | 76  | 80  | 85  | 90  | 95  | 100 | 105 |
| C HIP   | 88 | 92 | 96 | 100 | 104 | 109 | 114 | 119 | 124 | 129 |



Anatomical measures in cm

# BLOUSE EN SATIN FEMME

Réf. 747

### DESCRIPTION

- Blouse regular fit, coupe légèrement ajustée et adaptée à toutes les anatomies féminines
- Col rond avec des plis ornant le décolleté
- Fermeture par un bouton et une goutte dans le dos
- Manches longues resserrées au poignet
- Tissu satiné sans besoin de repassage .

### TISSU PRINCIPAL

- Composition:**  
100%Polyester
- Grammage:** 130 g/m<sup>2</sup>
- Ligament:** Satén
- Rétrécissement:** 3%
- Resist. Pilling:** 3-4
- Solidité de la couleur:**
- Lumière: 3-4
  - Lavage: 3-4

- Transpiration: 3-4
- Chlore: 1-2

### CERTIFICATIONS



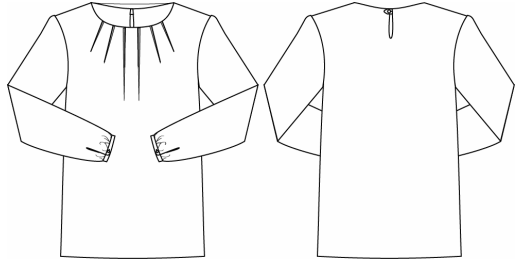
### ENTRETIEN



200  
Blanc Cassé

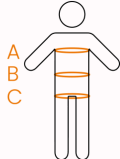
### PROPRIÉTÉS FONCTIONNELLES

**Séchage rapide:**  
Tissu technique avec un séchage 50% plus rapide que le coton.



### TAILLES AND MESURES

|            | 36 | 38 | 40 | 42  | 44  | 46  | 48  | 50  | 52  | 54  |
|------------|----|----|----|-----|-----|-----|-----|-----|-----|-----|
| A POITRINE | 82 | 86 | 90 | 94  | 98  | 102 | 106 | 110 | 114 | 118 |
| B TAILLE   | 64 | 68 | 72 | 76  | 80  | 85  | 90  | 95  | 100 | 105 |
| C BASSIN   | 88 | 92 | 96 | 100 | 104 | 109 | 114 | 119 | 124 | 129 |





ES

EN

FR

PT

# norvil

## BLUSA CETIM MULHER

Ref. 747

### DESCRIÇÃO

- Blusa regular fit, corte feminino levemente justo e adaptado a todas as morfologias
- Gola redonda com vincos que adornam o decote
- Fecho com botão e abertura em lágrima nas costas
- Manga comprida fechada de elástico circular no punho
- Tecido acetinado sem necessidade de ser engomado

### TECIDO PRINCIPAL

Composição:

100%Poliéster

Gramatura: 130 g/m<sup>2</sup>

Ligamento: Satén

Encolhimento: 3%

Resist. Pilling: 3-4

Solidez a tinturas:

Luz: 3-4

Lavagem: 3-4

Suor: 3-4

Cloro: 1-2



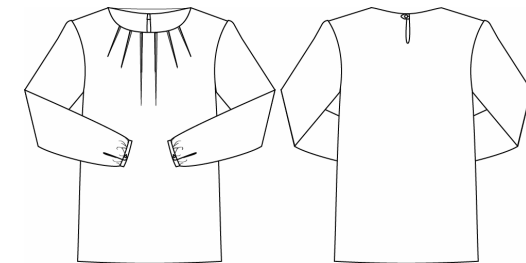
200  
Branco Natural

### PROPRIEDADES FUNCIONAIS



**Secagem rápida:**

Tecido técnico com secagem 50% mais rápida que o algodão



### CERTIFICADOS



### MANUTENÇÃO



### TAMANHOS E MEDIDAS

|           | 36 | 38 | 40 | 42  | 44  | 46  | 48  | 50  | 52  | 54  |
|-----------|----|----|----|-----|-----|-----|-----|-----|-----|-----|
| A PEITO   | 82 | 86 | 90 | 94  | 98  | 102 | 106 | 110 | 114 | 118 |
| B CINTURA | 64 | 68 | 72 | 76  | 80  | 85  | 90  | 95  | 100 | 105 |
| C ANCA    | 88 | 92 | 96 | 100 | 104 | 109 | 114 | 119 | 124 | 129 |

