

CAMISA STRETCH MUJER

Ref. 788

DESCRIPCIÓN

- Camisa Slim fit, corte entallado y adaptado a todas las anatomías
- Cuello inglés con escote adaptado a las tendencias
- Cierre mediante botones
- Pinzas en pecho y cintura para entallar
- Manga francesa pegada con puño y abertura
- Tejido altamente elástico

TEJIDO PRINCIPAL

Composición:

75% Algodon - 20% Poliamida - 5% Elastano

Gramaje: 108 g/m²

Encogimiento: 3%

Resist. Pilling: 4

Solidez a tinturas:

Luz: 5

Lavado: 4-5

Sudor: 4-5



001

Blanco

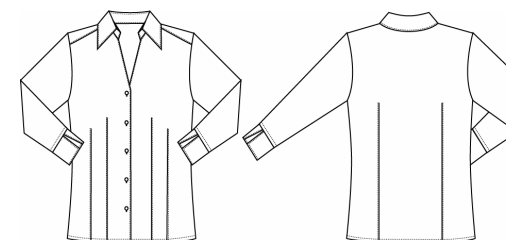
PROPIEDADES FUNCIONALES

**Gran Resistencia:**

Alta durabilidad.

**Stretch:**

Alta elasticidad y flexibilidad.



CONSERVACIÓN

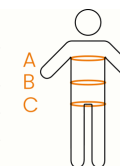


TALLAS Y MEDIDAS

A PECHO
B CINTURA
C CADERA

	36	38	40	42	44	46	48	50	52	54
A PECHO	82	86	90	94	98	102	106	110	114	118
B CINTURA	64	68	72	76	80	85	90	95	100	105
C CADERA	88	92	96	100	104	109	114	119	124	129

Medidas anatómicas en cm



STRETCH WOMEN'S SHIRT

Ref. 788

DESCRIPTION

- Slim fit shirt, tailored cut adapted to all anatomies .
- English collar with a neckline adapted to trends .
- Closure with buttons .
- Darts on the chest and waist for a tailored fit .
- Set in French sleeve with cuff and opening .
- Highly elastic fabric .

MAIN FABRIC

Composition:

75% Cotton - 20% Polyamide - 5% Elastane

Grammage: 108 g/m²

Shrinkage: 3%

Pilling Fastness: 4

Colour Fastness:

Light: 5

Washing: 4-5

Perspiration: 4-5



001
White

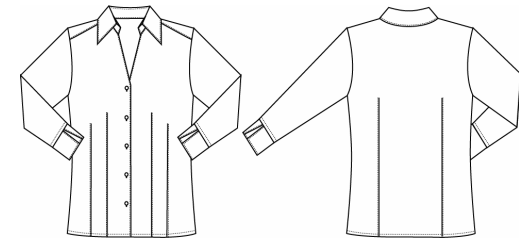
FUNCTIONAL PROPERTIES



High-resistance:
High durability



Stretch:
High elasticity and flexibility .



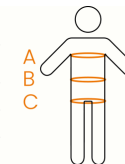
CARE



SIZES AND MEASUREMENTS

	36	38	40	42	44	46	48	50	52	54
A CHEST	82	86	90	94	98	102	106	110	114	118
B WAIST	64	68	72	76	80	85	90	95	100	105
C HIP	88	92	96	100	104	109	114	119	124	129

Anatomical measures in cm





ES

EN

FR

PT



CHEMISE FEMME STRETCH

Réf. 788

norvil

DESCRIPTION

- Chemise slim fit, coupe ajustée et adaptée à toutes les anatomies
- Col anglais avec encolure conforme aux tendances
- Fermeture par des boutons
- Pincés au niveau de la poitrine et de la taille pour affiner la silhouette
- Manches françaises ajustées avec poignet et ouverture
- Tissu hautement élastique.

TISSU PRINCIPAL

Composition:

75% Cotton - 20% Polyamide - 5% Elastane

Grammage: 108 g/m²

Rétrécissement: 3%

Resist. Pilling: 4

Solidité de la couleur:

Lumière: 5

Lavage: 4-5

Transpiration: 4-5



001

Blanc

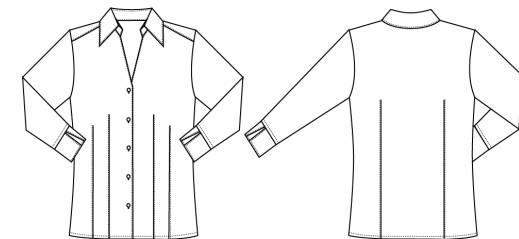
PROPRIÉTÉS FONCTIONNELLES



Grande Résistance:
Haute durabilité



Stretch:
Haute élasticité et flexibilité.



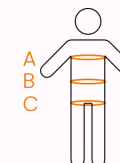
ENTRETIEN



TAILLES AND MESURES

A POITRINE
B TAILLE
C BASSIN

	36	38	40	42	44	46	48	50	52	54
A POITRINE	82	86	90	94	98	102	106	110	114	118
B TAILLE	64	68	72	76	80	85	90	95	100	105
C BASSIN	88	92	96	100	104	109	114	119	124	129





ES

EN

FR

PT

norvil

CAMISA STRETCH MULHER

Ref. 788

DESCRIÇÃO

- Camisa slim fit, corte justo e adaptado a todas as morfologias
- Gola inglesa com decote adaptado às tendências
- Fecho com botões
- Viscos no peito e na cintura para ajustar ao corpo
- Manga francesa cosida com punho e abertura
- Tecido altamente elástico

TECIDO PRINCIPAL

Composição:
75% Cotton - 20% Polyamide - 5% Elastane

Gramatura: 108 g/m²

Encolhimento: 3%

Resist. Pilling: 4

Solidez a tinturas:

Luz: 5
Lavagem: 4-5

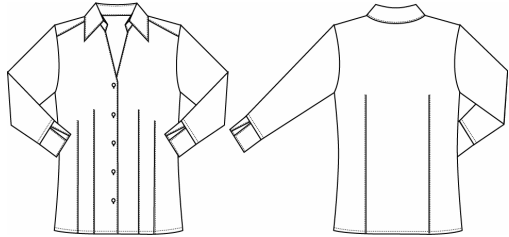
Suor: 4-5



001
Branco

PROPRIEDADES FUNCIONAIS

- Grande resistência:**
Alta durabilidade
- Stretch:**
Alta elasticidade e flexibilidade



MANUTENÇÃO



TAMANHOS E MEDIDAS

	36	38	40	42	44	46	48	50	52	54
A PEITO	82	86	90	94	98	102	106	110	114	118
B CINTURA	64	68	72	76	80	85	90	95	100	105
C ANCA	88	92	96	100	104	109	114	119	124	129

